



**iSWITCH**

---

# SISTEMAS DE GESTIÓN DE ENERGÍA ENERGY MANA- GEMENT SYSTEMS

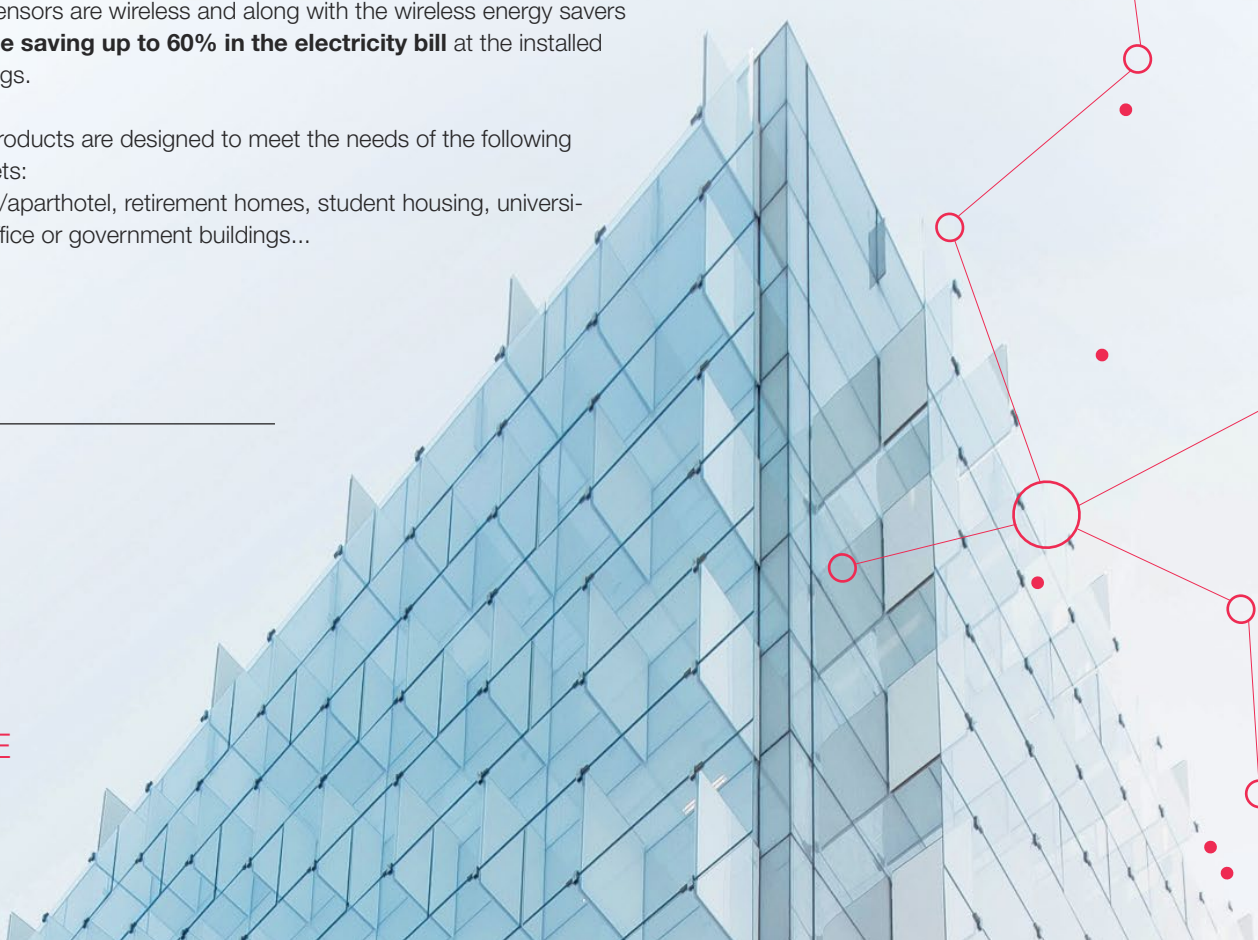
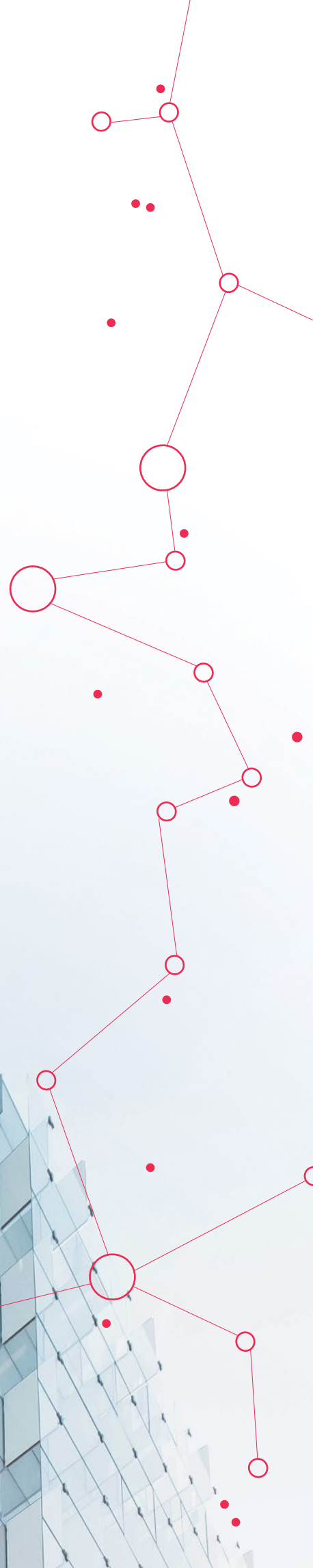
## Surface door-window sensor

Our sensors are wireless and along with the wireless energy savers **enable saving up to 60% in the electricity bill** at the installed buildings.

Our products are designed to meet the needs of the following markets:  
hotels/aparthotel, retirement homes, student housing, universities, office or government buildings...

---

**WE MAKE  
SENSE**

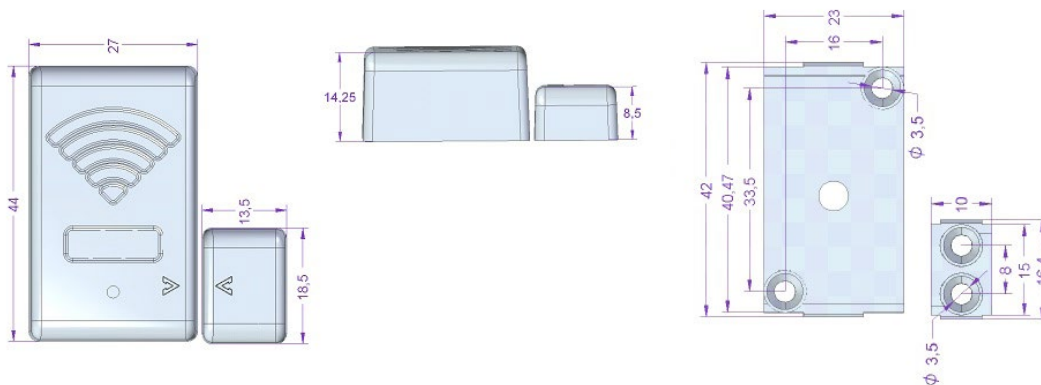




## Characteristics

DESCRIPTION	Surface door- window sensor
REFERENCE	SPVxlxS
POWER	3V CR2354 lithium battery
STANDALONE	4 years (13uA average consumption, max. 90mA)
COMMUNICATIONS	2,4GHz, IEEE 802.15.4 wireless
COMMUNICATION COVERAGE	20 m (distance to the energy saver)
INTERFACE	Red led
OPERATING TEMPERATURE	-10° to 50°
TECHNOLOGY	Magneto-resistive sensor+ magnet
DISTANCE SENSOR-MAGNET	1,2 cm max. separation. A slightly separation is recommended.
DIMENSIONS/ WEIGHT	Sensor (44 x 27 mm) and magnet (18,5 mm x 13,5 mm)/ 14 g
BOX	"Fireproof material according to UL94-V-0"

## Dimensions



## Benefits

**WIRELESS COMMUNICATION.** It detects the door/window status and sends the information to the energy saver.

**STANDALONE** Battery operated.

**EASY TO INSTALL.**

**ASSEMBLY.** It can be installed either inside the door or window