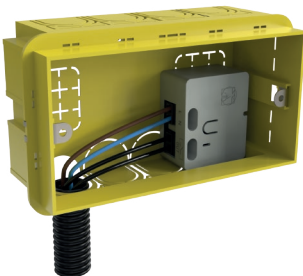


### Installation Guide

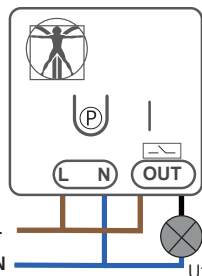


Connect the device to the system that is inside electrical boxes or junction boxes. Power the device to proceed with the pairing by pressing the P button.

NB. In the event that the time-out for pairing is runs out, the procedure for the pairing with the control panel can be carried out again by pressing again the P button .



Manual  
Nichi 220




### Signal Management

The following table indicate the warnings and malfunctions indications. A malfunction appears if there is no radio communication between the control panel and the device.

INDICAZION	EVENT
Red Led flashing	Device not initialized with control panel
Green LED flashing every 3 seconds	Device initialized with control panel with relay output off
Orange LED fixed light	Activated output

### Technical Specifications

Device type	Radio relay module
Power loss	< 1W
Ability to implement	10 <sup>6</sup> actuations
Communication protocol	GENIO
Operating frequencies	868.20 Mhz, 868.95 Mhz
RF power	13 dB
Modulation	GFSK
Radio signal	Range up to 1000 m
Power supply	230 V; 3,65 mA
Tipologia di azionamento	High capacity relay
Modalità di funzionamento	Bistable/impulsive (max 250 seconds)

Max load	 10A 5A
Contact status	Na/Nc
Installation	Indoor
Protection class	IP20
Operating temperatures	From -5°C to +45°C
Maximum allowable humidity	Up to 75%
Dimensions	44 x 36 x 21 mm
Weight	40 grams



**ATTENTION:** upstream of the device there must be an adequate isolation mechanism and protection against short circuits and overcurrents.