

Installation guide



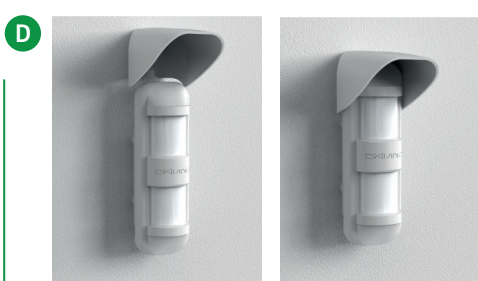
Use the provided screws to fix the bracket to the wall.



Fix the detector on the bracket and tighten the locking screw.

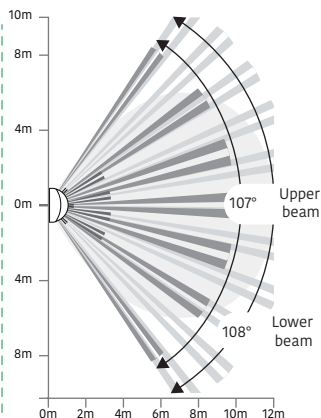


Turn on the device by pressing the button on the back.

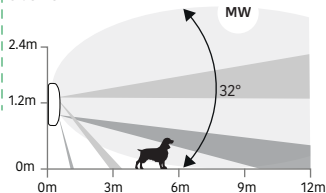


Insert the protective dome to increase the protection of the product from atmospheric agents.

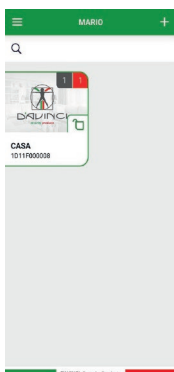
Upper view



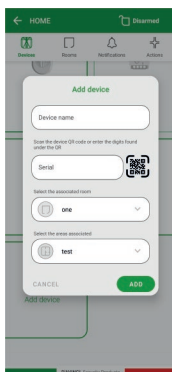
Side view



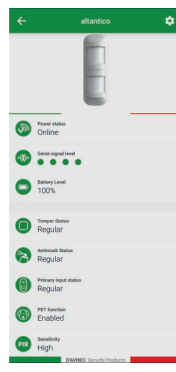
Configuration Atlantico via app D'AVINCI



Open the D'AVINCI app where the first system has been previously created.



Before scanning the QR code on the sensor Press the Add Device button. Type the requested data.



Press the sensor icon that has been added to enter the sensor status. Select the gear icon on the top right to program the device.