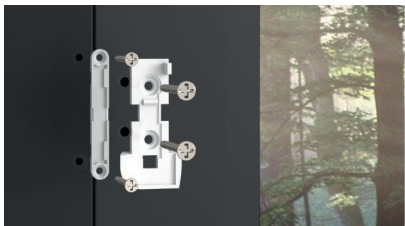


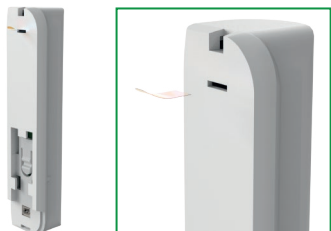
Installation guide

A



Use the template and provided screws to fix the bracket to the wall.

B



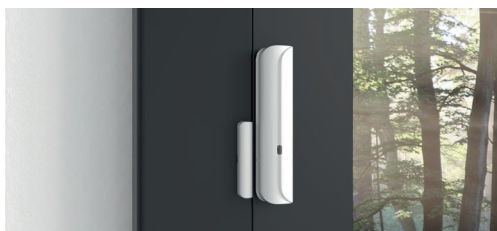
Pull out the battery tab on the back of the detector.

C



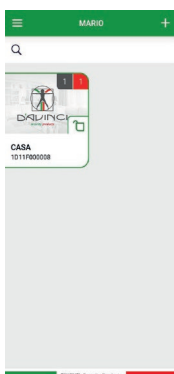
Fix the detector on the bracket.

D



- Make sure you have aligned the detector in the right direction with the magnet before attaching it.
- On one side there is a small protrusion at the height of the LED which indicates the presence of the internal reed where it must be placed alongside the magnet.

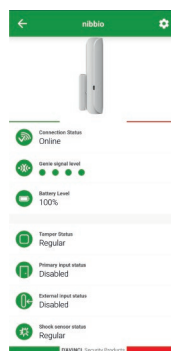
Configuration Nibbio via app D'AVINCI



Open the D'AVINCI app where the first system has been previously created.



Before scanning the QR code on the sensor Press the button **Add Device**. Type the requested data.



Press the sensor icon that has been added to enter the sensor status. Select the gear icon on the top right to program the device.