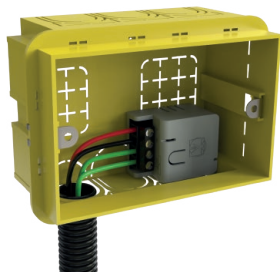
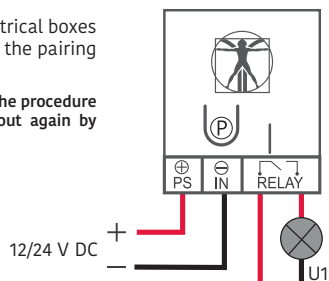


Installation Guide



Connect the device to the system that is inside electrical boxes or junction boxes. Power the device to proceed with the pairing by pressing the **P** button .

NB. In the event that the time-out for pairing is runs out, the procedure for the pairing with the control panel can be carried out again by pressing again the **P** button .



Signal Management

The following table indicate the warnings and malfunctions indications.

A malfunction appears if there is no radio communication between the control panel and the device.

INDICATION	EVENT
Red Led flashing	Device not initialized with control panel
Green LED flashing every 3 seconds	Device initialized with control panel with relay output off
Orange LED fixed light	Activated output

Technical Specifications

Device type	Radio relay module
Ability to implement	10 ⁶ actuations
Communication protocol	GENIO
Operating frequencies	868.20 Mhz, 868.95 Mhz
RF power	13 dB
Modulation	GFSK
Radio signal	Range up to 1000 m
Power supply	7-24 Vdc
Drive Type	High capacity relay
Operation mode	Bistable/impulsive (max 250 seconds)

Max switch current	5A
Contact state	Na/Nc
Installation	Indoor
Protection class	IP20
Operating temperatures	From -5°C to +45°C
Maximum allowable humidity	Up to 75%
Dimensions	29 x 37 x 23 mm
Weight	40 grams