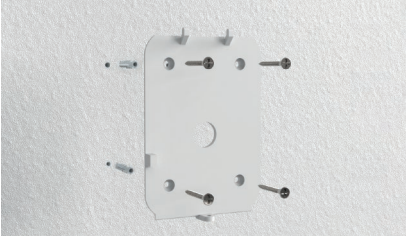


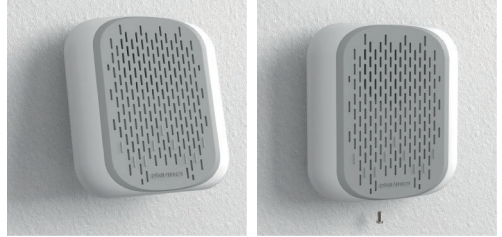
Installation guide

A



Fix the support to the wall through the supplied screws.

C



Fix the siren on the bracket with the appropriate locking screw.

B

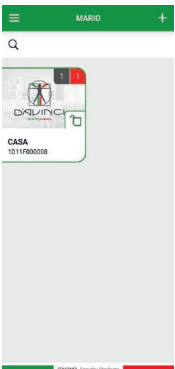


Remove the tabs from the batteries.

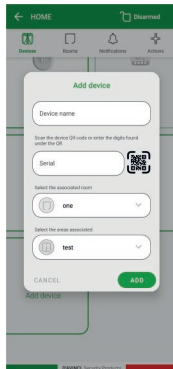
D



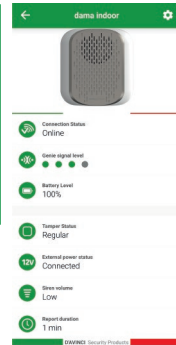
Configuration Dama indoor via app D'AVINCI



Open the D'AVINCI app where the first system has been previously created.



Before scanning the QR code on the sensor Press the Add Device button. Type the requested data.



Press the sensor icon that has been added to enter the sensor status. Select the gear icon on the top right to program the device.