

Installation guide

A



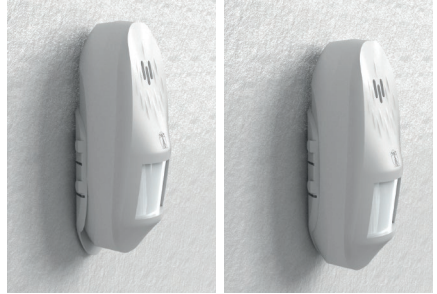
Use the provided screws to fix the bracket to the wall.

B

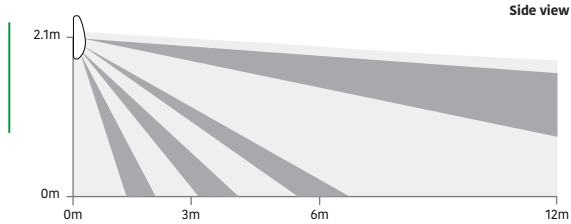
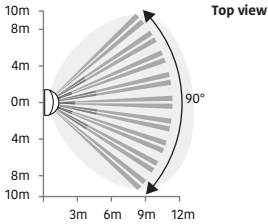


Remove the battery protection tab.

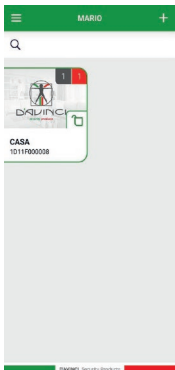
C



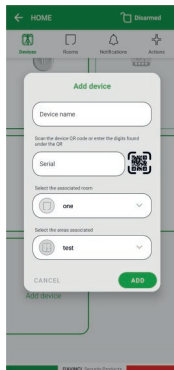
Fix the detector on the bracket and tighten the locking screw.



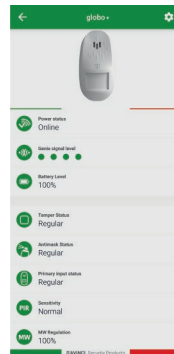
Configuration Globo+ via app D'AVINCI



Open the D'AVINCI app where the first system has been previously created.



Before scanning the QR code on the sensor Press the Add Device button. Type the requested data.



Press the sensor icon that has been added to enter the sensor status. Select the gear icon on the top right to program the device.